



**ARMSTRONG STEEL CORPORATION**  
**ON TIME. ON BUDGET.**



**WHY ARMSTRONG?**

# Armstrong vs. the Competition

## Roofing:

### Armstrong's Roof

Armstrong has a 35-year rust through perforation warranty on the roof. Roof material yield is 80,000 PSI, 26 gauge steel. Also available in 24 gauge.



### Competitors' Roof

Competition has a 20-year rust through perforation warranty, some use 29 gauge steel.



## Fasteners:

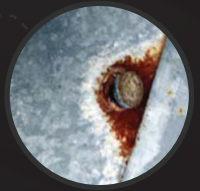
### Armstrong's Fasteners

Long life fasteners have a lifetime warranty. No rusting, no oxidation and always remain shiny. Armstrong provides neoprene washers which prevent over-drilling of the fasteners. Over-drilling can tear the sheeting and cause leaks. Available in painted colors to go with colored roofs.



### Competitors' Fasteners

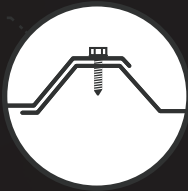
Zinc fasteners rust! Cadmium plated fasteners do not rust, but do oxidize leaving black streaks. Competition does not supply neoprene washers with wall screws. No protection against over-drilling which can tear the sheeting, causing leaks and/or crack the paint, leading to rust.



## Panels:

### Armstrong's PBR Roof

Purlin bearing rib (PBR) roof panels provide for a full overlap of the corrugation.



### Competitors' "R" Panel Roof

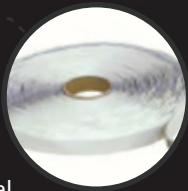
"R" panels overlap only 1/3 of the way into the corrugation. Lessening strength in the overlap and more potential for leaks.



## Sealant:

### Armstrong's Mastic (Sealant)

1" double beaded mastic tape where sheets overlap vertically and 1" mastic where sheeting overlaps side by side, which guarantees to prevent leaks. When the screw is drilled into the sheeting it will hit the mastic creating a seal on the screw and hole completely preventing leaks.



### Competitors' Mastic

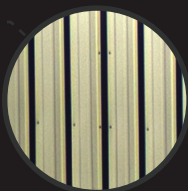
3/8" mastic tape for sides and vertical overlap. Vertical overlap is not double beaded. Smaller mastic tape is less than half the width of Armstrong's. When the screw is drilled, it may miss the mastic entirely which can cause leaks.



## Paint:

### Armstrong's Paint

Armstrong has a 40-year rust through perforation warranty - an industry first!



### Competitors' Paint

Competition offers only 10 or 20 year warranty on their paint.



## It's All About The Details

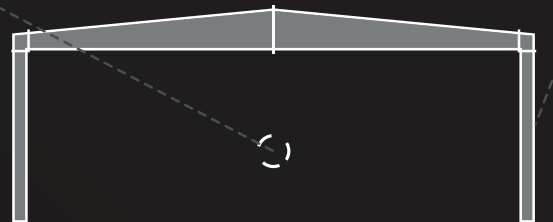
Armstrong Steel Buildings are fabricated in state of the art facilities. Our culture has embodied a sort of fanatical attention to detail. While others are focused on making their product the cheapest, our products are designed to be the best AND affordable. We think cutting corners to be the cheapest with the highest profit margins is misguided. With Armstrong Steel you can have both! A great product to be proud of and a great price. We believe Armstrong products should genuinely be better, this requires real discipline, and that's what drives us – a sincere, genuine appetite to make something excellent.

## Armstrong Engineering

Our detailing & engineering department has distinguished itself in the industry by providing timely and quality design and detailed engineering services. These guys do the heavy lifting with respect to our product design & development. With over 150+ combined years of experience, they excel in designing stunning building systems that are easy to erect and drafting easy to read blueprints & plans. They develop connection calculations & fully detailed approval, permit, construction, and shop drawings in house at our corporate headquarters. They're aces at ensuring tight deadlines are met and phases are completed as planned. They've got an eye for design and they ensure we're all speaking the same language when that building of yours arrives on site.

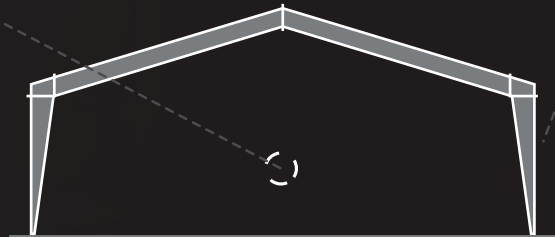
### Clear Span, Straight Column Frame

Clear span rigid frames are strong, durable and economical. This type of frame doesn't require any interior support columns and can be a perfect solution for large space requirements.



### Clear Span, Tapered Column Frame

Clear span rigid frames are strong, durable and economical. This type of frame doesn't require any interior support columns and can be a perfect solution for large space requirements.



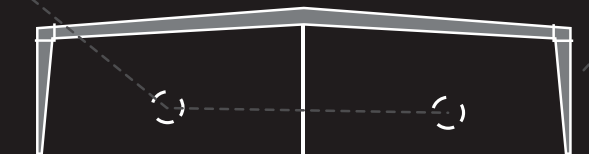
### Multiple Span, Straight Column Frame

Multiple span, straight column frames have interior support columns. These interior columns distribute the load and reduce costs of extra wide buildings.



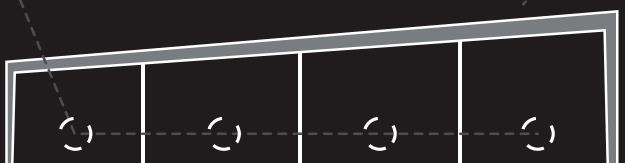
### Multiple Span, Tapered Column Frame

Multiple span frames provided with tapered columns and interior straight columns. These interior columns distribute the load and reduce the cost of extra wide buildings.



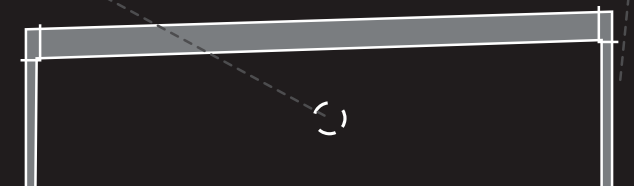
### Multiple Span, Single Slope Frame

Multiple span, single slope frame provided with both of the sidewalls at different heights. This makes the roof of the building slope from front back or vice versa.



### Clear Span, Straight Single Slope Frame

Single slope frame without the need for any interior support columns.





**ARMSTRONG STEEL CORPORATION**

[WWW.ARMSTRONGSTEEL.COM](http://WWW.ARMSTRONGSTEEL.COM)

Toll Free: 800.345.4610 Fax: 720.230.7266

Corporate Headquarters:  
5889 Greenwood Plaza Blvd.  
Greenwood Village, CO 80111